

The Bergen Bonsai Society

AUG 2012 Newsletter

Meeting: Sun Aug.18th.

Time: Noon—5 PM

Place: McFaul Nature Center

150 Crescent Ave. Wyckoff, NJ



ANNUAL BONSAI SHOW McFaul Environmental Center

The Bergen Bonsai Society
Incorporated
P.O. Box 822
Teaneck, New Jersey 07666
Website: BergenBonsai.com



Year 2012 Programs Mark Your Calendar

	<u>DATE</u>	<u>EVENT AND/OR GUEST ARTIST</u>	<u>AM</u> <u>MTG</u>	<u>AFT</u> <u>MTG</u>	<u>EVE</u> <u>MTG</u>	<u>AWAY</u> <u>MTG</u>
	January 15	<u>DEAN GILLILAND –PRESENTATION on KOREA</u>	<u>X</u>			
	February 19	<u>ELECTION OF BBS BOARD — POT SALE; SLIDE SHOW</u>	<u>X</u>			
	March 18	<u>OPEN WORKSHOP —BYOB / MATERIAL SUPPLIED</u>	<u>X</u>	<u>X</u>		
	April 29	<u>MID-ATLANTIC ARTIST — John Thompson — L/D & Workshop</u>	<u>X</u>	<u>X</u>		
	April 20 - 22	<u>MID-ATLANTIC SPRING FESTIVAL</u>				<u>X</u>
	May 20	<u>OPEN WORKSHOP — BYOB /MATERIAL SUPPLIED</u>	<u>X</u>	<u>X</u>		
*	June SAT 16	<u>MARTY SCHMALENBERG — DEVELOPING YOUR BONSAI</u> <u>EYE AT MARTY'S STUDIO STILLWATER NJ</u>	<u>X</u>	<u>X</u>		<u>X</u>
	July 15	<u>MARTY SCHMALENBERG — PART 2 / WORKSHOP</u>	<u>X</u>	<u>X</u>		
*	August SAT 18	<u>ANNUAL BONSAI SHOW — McFaul Environmental Center Wy-</u> <u>ckoff, NJ (1pm-5pm)</u>		<u>X</u>		<u>X</u>
	September 16	<u>ANNUAL PICNIC AND AUCTION</u>		<u>X</u>		
	October 14	<u>GUEST ARTIST —David Easterbrook —AM L/D & PM workshop</u>	<u>X</u>	<u>X</u>		
	November 18	<u>WINTERING REVIEW AND ANNUAL SHOW AND CRITIQUE</u>	<u>X</u>			
	December 9	<u>HOLIDAY PARTY</u>		<u>X</u>		<u>X</u>

* Indicates a change in date, event or time, since previous Newsletter

NOTES

1. All meetings @ Closter Nature Center are on Sundays
2. All morning meetings @ Closter Nature Center start 9:45 AM to APROX. 1:30 PM
3. All afternoon meetings @ Closter Nature Center start APX. 2 PM to APROX. 5 PM

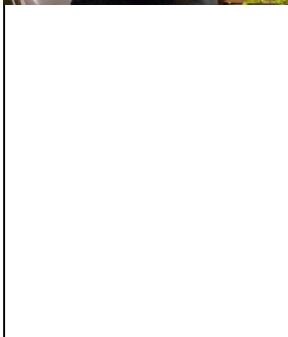
LAST MONTH'S MEETING —July 15th —MARTY SCHMALENBERG —PART II / WORKSHOP



Last month we went from Marty's Studio in Stillwater to Marty's Studio Part II in Closter. We had a very good turnout so there were many bonsai's for Marty's review. Each person that brought in a bonsai was able to get time with Marty. Each tree was held up to our group while Marty gave suggestions on how to improve the tree. Also, our members asked lots of questions as each tree was shown. The best part of the review was the reinforcement of bonsai basics and what to look at while designing a tree. Marty's suggestions included; grafting to improve the look of the tree, cutting branches to have the right balance, and changing soil to help with the drainage.

After the morning meeting, members who had brought in trees were given one on one time with Marty to help improve their trees. It was a great opportunity for all.

Our club was fortunate to have Marty for two monthly meetings. His experience and knowledge was a benefit to us all. And one final note; we congratulate Marty on his recent marriage and may they enjoy much happiness.



THIS MEETING — AUG 18TH SATURDAY —ANNUAL BONSAI SHOW— MCFAUL ENVIRONMENTAL CENTER WYCKOFF, NJ (1PM –5 PM)

Please remember to let Ralf know if you are bringing a tree to our 3rd Annual Bonsai Show. It will be held at the James A McFaul Environment Center located at 150 Crescent Avenue, Wyckoff, NJ,. Some of us will be there by noon to set up. If you are bring your bonsai, try to arrive by 12:30 pm so we can have it displayed accordingly. Center is open to the public from 1:00pm-4:00pm. One or two of our members will be giving a demo showing the transformation of a shrub into a beautiful bonsai.

As always, we need your support and participation to help educate and promote Bergen Bonsai to those who may be interested in the art of Bonsai.

Ralf contact info 201-652-6294 , email rjs495@erols.com

NEXT MEETING — SEPTEMBER 16th, 2012—OUR 132nd ANNUAL PICNIC & AUCTION

Bring your friends, relatives and money to our 132nd Annual Picnic & Auction at the Closter Nature Center, 154 Ruchman Road, Closter, NJ from Noon to 3:00pm. The cost of the picnic will be \$15.00 a person. Please advise if you will be attending. We could possibly have the picnic in the cabin, because of the pond drain. However, please bring your chair in case it will be outdoors. As last year, we will have the same Caterer with plenty of delicious food & cold drinks. This is a wonderful time for us to relax & socialize together and be part of our main fundraising event. Remember to bring your bonsai related items for our auction.

****A new item for the picnic:** If anyone would like to auction a tree or bonsai related item, which is of value, we will offer the tree or item at a minimum bid of \$50.00 and split the bid on an 80(donator)/20 (club) ratio.**

Yes, we will happily attend the 132 th Annual Picnic & Auction on Sept 16th.
Enclosed is my check (payable to Bergen Bonsai \$15.each X _____member / guest)

Mail your reservation to **Bob Pruski President**
16 Hamilton St.
Montvale, NJ 07645

BONSAI CARE FROM YAMA KI BONSAI SOCIETY — MONTH OF AUGUST

- 1.) Fertilizing** — Stop feeding hardy plants by end of August, except evergreen needle, flowering and fruit bearing. Use 1/2 strength and low nitrogen for flowering and fruiting 5-10-10.
- 2.) Location** — Remove to half shade soft needled evergreen (e.g., Larch), thin leafed broad leaf, and deciduous (e.g., Maple, Hornbeam).
- 3.) Pests & Diseases** — Protect from sun after spray. Watch for red spider.
- 4.) Potting** — Only Tropical & Sub Tropical.
- 5.) Watering** — Before sunrise and after sunset use mist spray in addition to regular watering, This procedure will terminate red spider and provide proper humidity.
- 6.) Temperature** — Watch for cold nights below 45* for tropical and sub-tropical plants.

NEWS FROM OTHER BONSAI CLUB

BBS WEBSITE

Go to www.bergenbonsai.com & you can view our newsletters, pictures from our latest meetings, the Mid-Atlantic Convention, our **extensive library** & much more. Continued thanks to Bob Pruski.

LIBRARY

As usual, the **complete** library inventory is posted on our website (**BergenBonsai.com**). Find what you want, contact our librarians (for videos — David; hard cover books — Rose; Bonsai Today/ Focus —Diane, and Int'l Bonsai, BCL Misc — John), and they will bring it to the next meeting. This is a tremendous asset and one of the best ways to learn more about bonsai in general. The library is a treasure trove of information just waiting to answer all of your questions and some that you haven't even thought about yet. Use these winter months to get answers to the questions that you have about your trees in time for the growing season.

OFFICERS & STAFF

<u>OFFICES</u>	
President	Bob Pruski
Vice President	Peter Sobel
Treasurer	Mitch Becker
Secretary	Marlene Cuniberti
<u>EXECUTIVE COMMITTEE</u>	
Mitch Becker	Bob Pruski
Rose Chan	Ralf Schumann
Marlene Cuniberti	Len Schwartz
Michael Humphrey	Peter Sobel
Diann Pinkowski	

<u>COMMITTEES</u>	
Library (Videos)	David Feitelson
Library (Hard Cover Books)	Rose Chan
Library (Bonsai Today/Focus)	Diann Pinkowski
Library (Int'l Bonsai, BCL misc.)	Diann Pinkowski
Hospitality	Teresa Plummer
Refreshments	Elsbeth Christem Ralf Schumann
Tokonoma	Michael Humphrey
Good & Welfare	Virginia Shen
Executive Board Meetings	Jim Killian
MidAtlantic Representatives	Len Schwartz Ralf Schumann
Programs	Bob Pruski Peter Sobel
Newsletter Production	Rose Chan
Photographer	Bob Pruski ; Ralf Schumann
Newsletter Reporter	Mitch Becker
Website	Bob Pruski